

Thank you for purchasing a Shakespeare antenna product. Customer comments are welcome. Before installing, please study the diagram and check parts supplied against those listed.

**IMPORTANT! Please read all instructions before installing.**

The Style 4715 Mounting Clamp Set comprises two clamp assemblies which can be used to attach an antenna of 1” to 2” in diameter to a mast of 1” to 2” in diameter. The included rubber pads (Gaskets) can be used to cushion the antenna when installation requires clamping to the antenna radome.

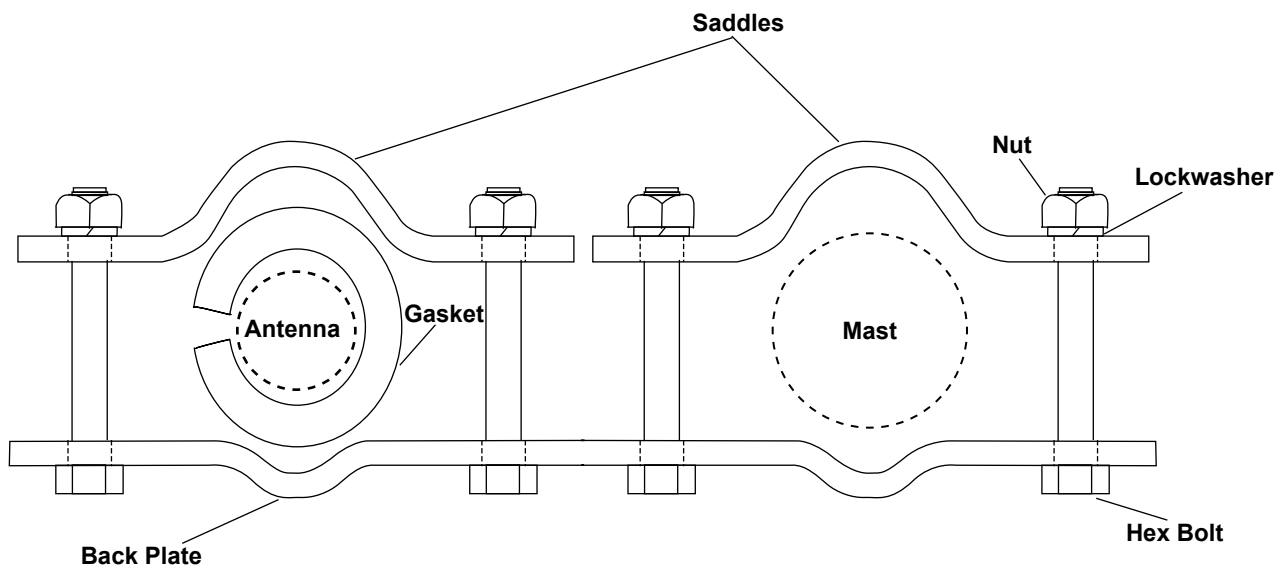
Supplied Parts	
2	Back Plates
4	Saddles
2	Gaskets
8	Hex Bolts
8	Hex Nuts
8	Lockwashers

**Tools required:** Pliers or wrench

**Installation Instructions**

Choose a mounting location that is as free as possible of obstructions.

1. Assemble two Saddles to Back Plates using 4 bolts, 4 nuts, and 4 lockwashers, as shown in the diagram.
2. If the Gasket is needed, first trim it to the desired length, using the antenna as a guide, then position the Gasket between the antenna and the clamp set, as shown in the diagram.
3. Tighten all bolts snugly. Do not over-tighten.



35-90-1399-00

**Shakespeare Electronic Products Group**

U.S. Operations: 6111 Shakespeare Rd. · Columbia, SC 29223 · 803-227-1590 · Fax: 803-419-3099 · www.shakespeare-marine.com  
 U.K. Operations: Enterprise Way, Fleetwood, Lancashire, FY7 8RY, England · +44 (0) 1253 858787 · Fax: +44 (0) 1253-859595 · www.vtronix-antennas.com